



**KASTHURIBHAI
NAGAR**
ADYAR

Redbrick Soundarya

- ▶ Located parallel to OMR in Adyar
- ▶ Near MRTS Kasthuribhai Nagar Station
- ▶ Near Madhya Kailash temple
- ▶ Near IIT
- ▶ Near Anna University
- ▶ Near CLRI
- ▶ Near TIDEL & TICEL Park
- ▶ Near Ramanujam IT Park
- ▶ Central to all locations

Expect more from us



STILT FLOOR PLAN

APT - 1/3/5
 SALEABLE AREA - 1558 SFT

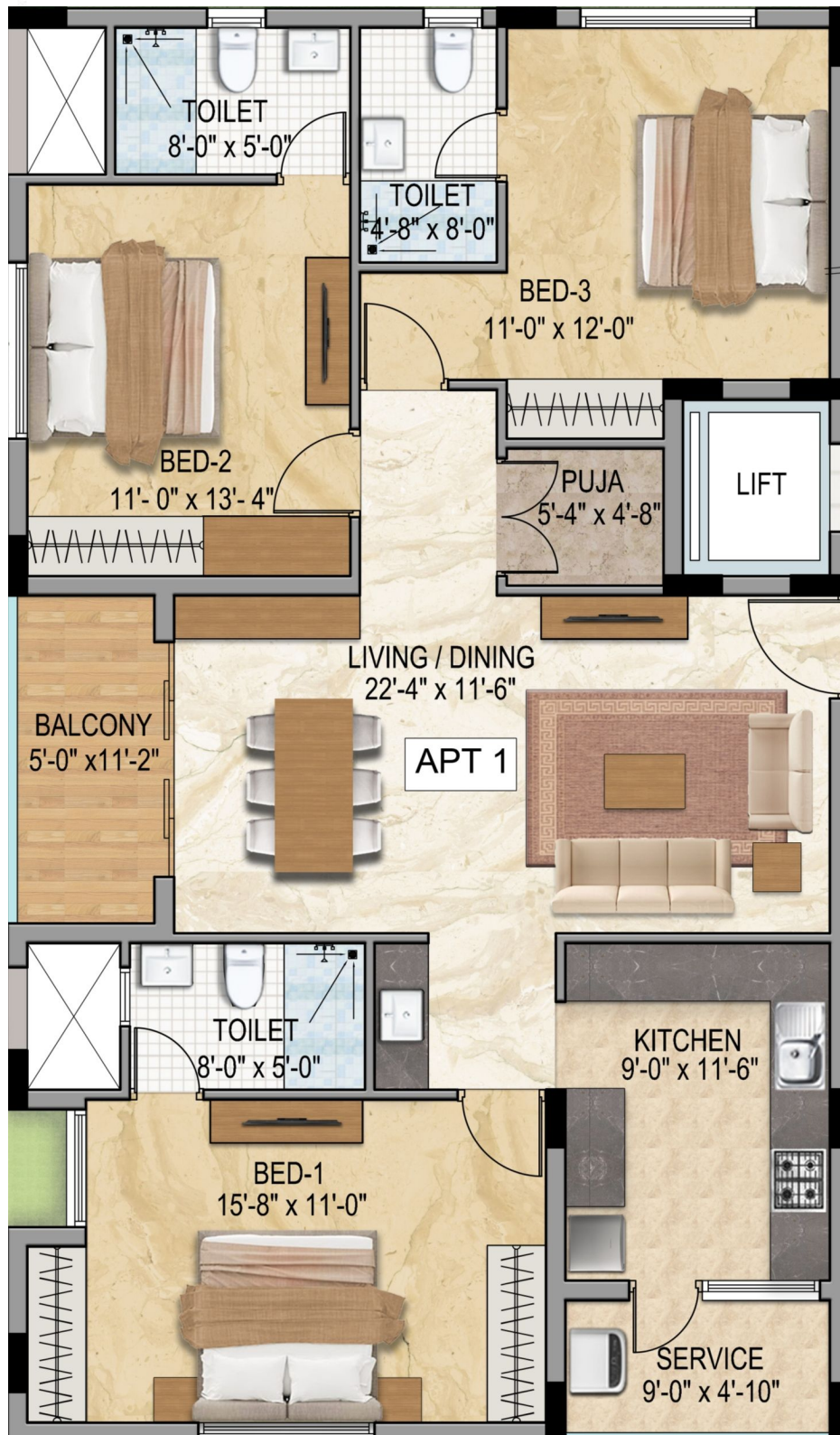
APT - 2/4/6
 SALEABLE AREA - 1609 SFT



TYPICAL FLOOR PLAN (STILT + 3 FLOORS)

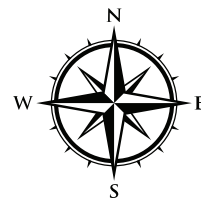
LEVEL - 1, 2, 3

FLAT - A



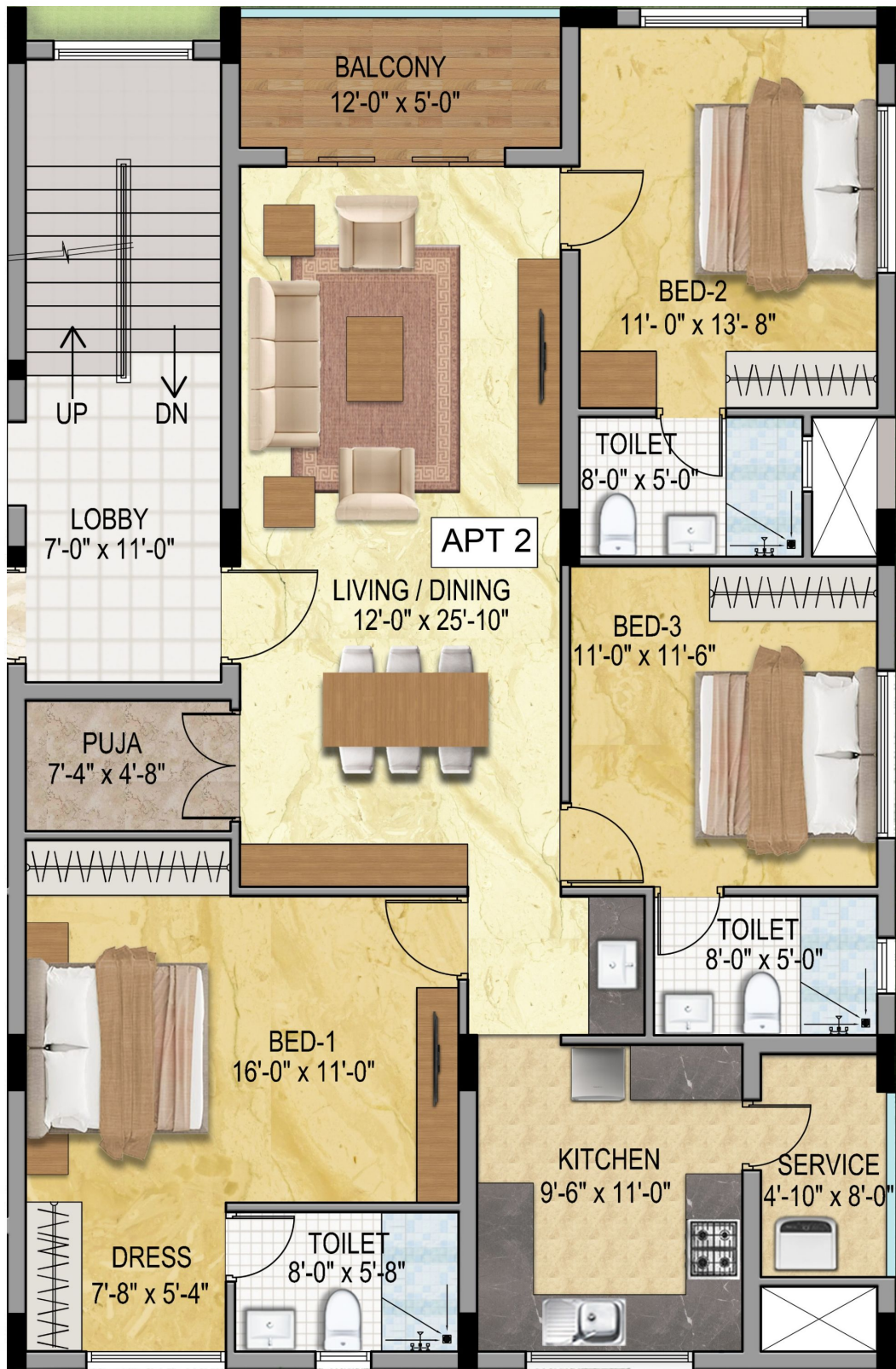
FLAT - A TYPICAL FLOOR PLAN
(1ST, 2ND, 3RD)

AREA :
FLAT - A = 1558 SQ.FT



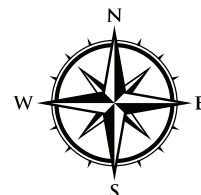
LEVEL - 1, 2, 3

FLAT - B

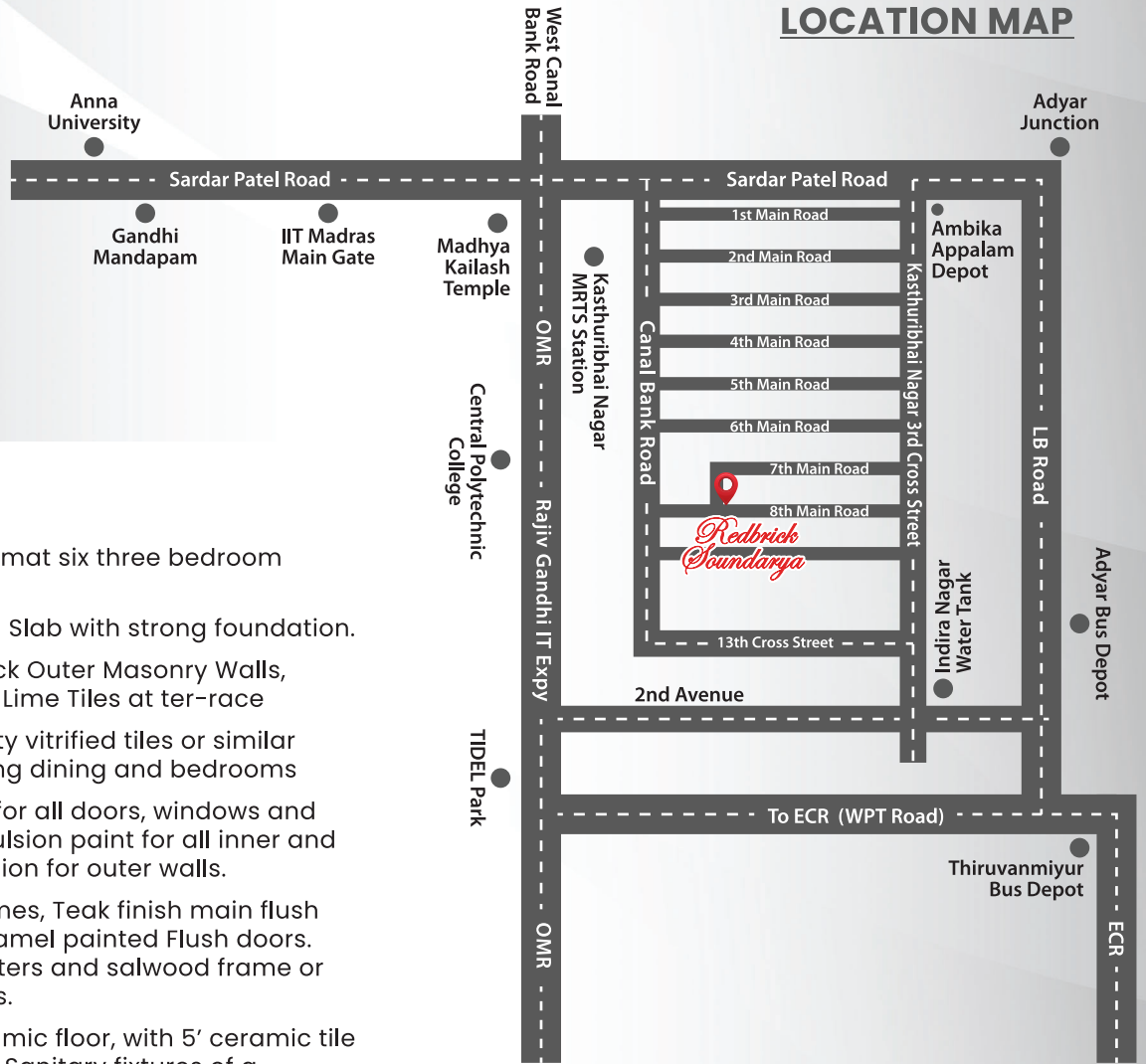


FLAT - B TYPICAL FLOOR PLAN
(1ST, 2ND, 3RD)

AREA :
FLAT - B = 1609 SQ.FT



LOCATION MAP



SPECIFICATIONS

Form: Stilt plus three format six three bedroom apartments

Structural: 5" Thick RCC Slab with strong foundation.

Super Structural: 8" Thick Outer Masonry Walls, weathering course with Lime Tiles at ter-race

Flooring: Superior Quality vitrified tiles or similar flooring & skirting in living dining and bedrooms

Painting: Enamel paint for all doors, windows and grills. Putty finished emulsion paint for all inner and standard exterior emulsion for outer walls.

Joinery: Teak wood frames, Teak finish main flush door, all other doors enamel painted Flush doors. Windows with teak shutters and salwood frame or standard UPVC windows.

Bathrooms: Proper ceramic floor, with 5' ceramic tile dado for all bathrooms. Sanitary fixtures of a reputable make and chromium plated fittings of a reputable make, hot and cold mixtures with shower and provision for geyser, for all bathrooms

Kitchen: Superior ceramic tile flooring & 2' dado ceramic tile over granite kitchen platform with stainless steel sink.

Electrical: 3 phase power supply with concealed wiring and Anchor or equivalent switches. TV & Telephone point in living and bedrooms. Provision for AC in bedrooms. Provision for exhaust fan in kitchen and toilet.

Plumbing: Concealed pipeline for bath and kitchen. Duct for external pipeline. Over-head Tank with two storage compartments.

Lift: Four to six passenger lift

High Luxurious Apartment.

Availability 3 Bedrooms Apts.

Super Build up Area - Flat A 1558 sq.ft

Flat B 1609 sq.ft

Total No. of Units - 6 Apts.

Number of Floors - Stilt + 3 Floors.

Project Completion Date - June 2024.



#A2, 6 BN Road (North Boag Road),
T.Nagar, Chennai-600017. Tamil Nadu, India.

☎ +91 95510 59991 / 44 2815 2927

✉ info@redbrickrealtor.com

🌐 www.redbrickrealtor.com

CONTACT

Vasudevan Ravi



+91 95510 59991

+91 99408 74514

vasudevanr@redbrickrealtor.com